



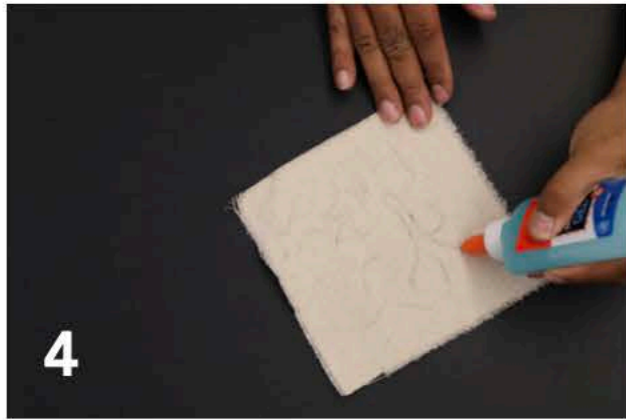
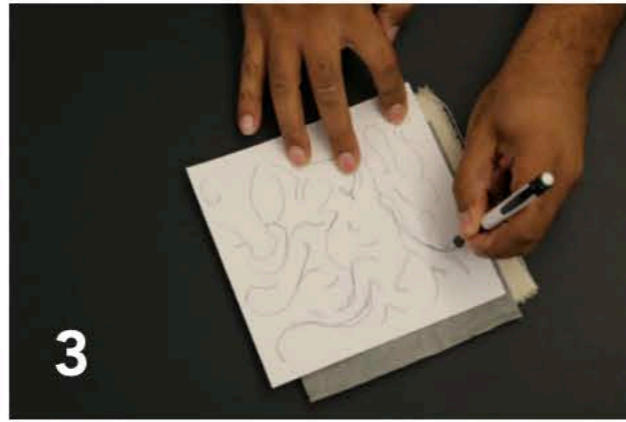
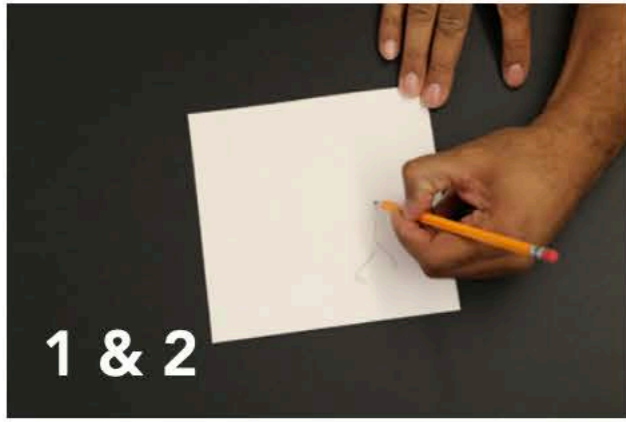
This activity is inspired by the exhibition *Weaving Splendor: Treasures of Asian Textiles from The Nelson-Atkins Museum of Art*. The exhibition presents rarely seen textiles from China, India, Iran, Japan, and Turkey. *Weaving Splendor* highlights a combination of innovative and meticulous techniques as well as precious materials used by Asian textile artists from the fifteenth century to today.

Textiles include a wide range of decorative and functional objects such as ropes, wall hangings, flags, shawls and sashes.

Textile designers use a variety of techniques. The wall hanging seen here was created using *yūzen*, a dye technique in which patterns are drawn on fabric with resist paste. Dyes are brushed on, then the resist is washed away to reveal a white outline defining the motifs. *Yūzen* is named for Miyazaki Yūzen, the eighteenth-century Japanese artist who is credited with perfecting the technique.

Japan (Meiji–Taishō periods, 1868–1926). Hanging with rooster, hen, and flowers, late 19th–early 20th centuries. Tapestry-woven silk with partly cut silk velvet pile dyed with the *Yūzen* technique. The Nelson-Atkins Museum of Art, Bequest of Ella C. Loose, 45-70/48





## Decorative Wall Hanging

### Objective

In this lesson, you will create a wall hanging inspired by the textiles and dyeing techniques used in the *Weaving Splendor* exhibition.

### Materials

Design templates  
Stencils  
Pencil  
Paper  
Canvas  
Transfer paper  
Gel glue  
Ink pen  
Paint brush  
Fabric paint  
Cup  
Dowel  
String

### Steps

1. Select a template or stencil, or think of an original design for your wall hanging.
2. Trace or sketch your design onto a sheet of paper. If you'd like, you may use multiple stencils or the same one repeatedly to make your design.
3. Cover your canvas with a piece of transfer paper, then place your sketch face-up on top of the transfer paper. Use an ink pen to trace your image so that it transfers to the canvas.
4. Trace along the outlines of your design with gel glue, then allow the glue to dry.
5. Use a paintbrush to apply fabric paint to the background and the image.
6. After painting, allow fabric paint to set. Then, soak the canvas in warm water until the gel glue dissolves, leaving outlines.
7. Use scissors to make one slit in the upper left corner of the canvas and one in the upper right, then run the dowel through the openings.
8. Tie each end of a piece of string around each end of the dowel, making sure the string is long enough to hang from a hook or nail on the wall.