

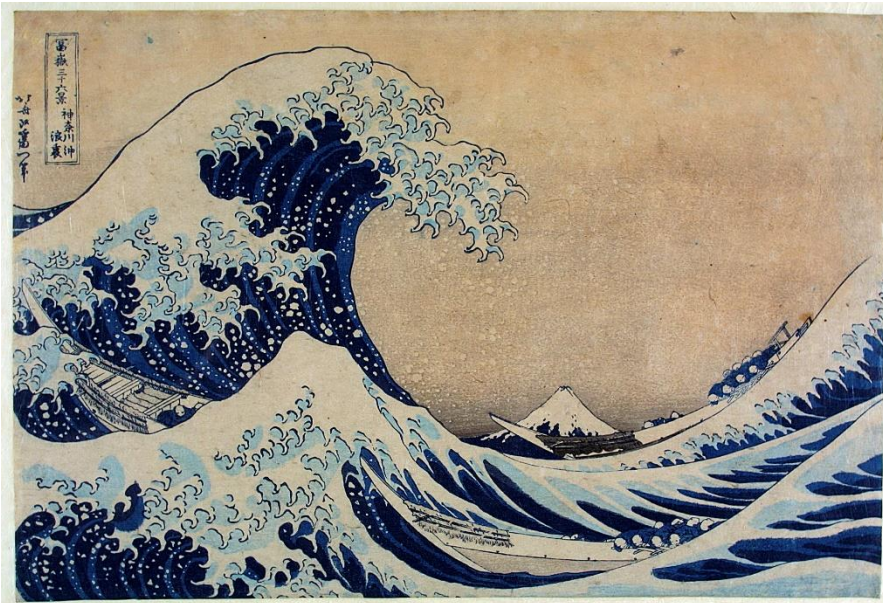
## ***Journey through Japan: Myths to Manga***

October 25, 2024–February 16, 2025 | Upper-Level Galleries

Designed with our younger audience in mind, yet fun and fascinating for all ages, this exhibition goes on a colorful, atmospheric exploration through Japan to show how popular stories have shaped the country's art, design, and technology across the centuries. Divided into four thematic sections—Sky, Sea, Forest, and City—it presents over 150 historic and contemporary objects, ranging from animated movies, origami, and ukiyo-e woodblock prints to Daruma dolls, robots, and youth fashion.

To spark more creativity, activities inspired by the exhibition will be offered in both the Upper-Level Galleries and Martin ArtQuest. *Journey through Japan: Myths to Manga* celebrates the spirit of playfulness and imagination that the Japanese never outgrow.

[Created by the V&A](#) - Touring the World



Katsushika Hokusai. *Under the Wave off Kanagawa*, from the series *Thirty-Six Views of Mount Fuji*, ca. 1831. V&A: Given by the Misses Alexander, E.4823-1916. © Victoria and Albert Museum, London

Supported in part by  
**Sandra Schatten Foundation**  
**The Anne and Joe Russell Family**

Support for Spanish  
translation provided by the  
**Center for Latin American,  
Caribbean, and Latinx Studies  
at Vanderbilt University**

The Frist Art  
Museum is  
supported in  
part by



## **Curriculum Connections: *Journey through Japan: Myths to Manga* Tennessee Academic Standards**

### **Fine Arts Standards: Media and Visual Arts**

RESPOND: Perceive and analyze artistic work.; Interpret intent and meaning in artistic work.;

3. Apply criteria to evaluate artistic work.

CONNECT: Synthesize and relate knowledge and personal experiences to artistic endeavors.;

Relate artistic ideas and works with societal, cultural, and historical context.

### **English Language Arts Standards**

#### **Grades K-5**

K.RL.IKI.7: With prompting and support, orally describe the relationship between illustrations and the story in which they appear.

1.RL.IKI.7: Either orally or in writing when appropriate, use illustrations and words in a text to describe its characters, setting, or events.

2.RL.KID.2: Recount stories, including fables and folktales from diverse cultures, and determine their central message, lesson, or moral.

2.RL.KID.3: Describe how characters in a story respond to major events and challenges.

2.RL.IKI.7: Use information gained from illustrations and words in a print or digital text to demonstrate understanding of its characters, setting, or plot.

3.RL.KID.2: Recount stories, including fables, folktales, and myths from diverse cultures; determine the central message, lesson, or moral and explain how it is conveyed through key details in the text.

3.RL.KID.3: Describe characters in a story and explain how their actions contribute to the sequence of events.

3.SL.CC.2: Determine the main ideas and supporting details of a text presented in diverse media such as visual, quantitative, and oral formats.

3.RL.IKI.7: Explain how illustrations in a text contribute to what is conveyed by the words.

4.RL.IKI.7: Make connections between the print version of a story or drama and a visual or oral presentation of the same text.

5.RL.IKI.7: Explain how visual and multimedia elements contribute to the meaning, tone, or mood of a text, such as in a graphic novel, multimedia presentation, or fiction, folktale, myth, or poem.

#### **Grades 6-8**

7.SL.CC.2: Analyze the main ideas and supporting details presented in diverse media formats; explain how this clarifies a topic, text, or issue under study.

8.RL.IKI.7: Analyze the extent to which a filmed or live production of a story or drama stays faithful to or departs from a text or script, evaluating the choices made by the director or actors.

8.RL.IKI.9: Analyze how contemporary texts are shaped by foundational texts or literary archetypes and how authors allude to traditional works, myths, or religious texts; describe how traditional elements are rendered anew.

8.SL.CC.2: Analyze the purpose of information presented in diverse media formats; evaluate the motives, such as social, commercial, and political, behind its presentation.

#### **Grades 9-12**

9-10.RL.KID.3: Analyze how complex characters, events, and ideas develop and interact over the course of a text to impact meaning.

9-10.RL.IKI.7: Evaluate the topic, subject, and/or theme in two diverse formats or media.

11-12.RL.IKI.7: Evaluate the topic, subject, and/or theme in multiple diverse formats and media, including how the version interprets the source text.

## **Social Studies Standards**

### **Grades K-12 - Social Studies Practices**

SSP.01: Gather information from a variety of sources, including: printed materials (e.g., literary texts, newspapers, political cartoons, autobiographies, speeches, letters, personal journals), graphic representations (e.g., maps, timelines, charts, artwork), artifacts, and media and technology sources.

### **Grades K-5**

K.09: Explain what a map and globe represent.

1.13: Distinguish the difference between a lake, mountain, ocean, and river.

1.25: Compare ways people lived in the past to how they live today, including: forms of communication, modes of transportation, and types of clothing.

### **Grades 6-8**

S.07: Describe components of culture (e.g., nonmaterial culture, norms and values, material culture, subcultures).

7.08: Describe the origins and central features of Shintoism: Key Person(s): None; Sacred Texts: No sacred text; Basic Beliefs: localized tradition that focuses on ritual practices that are carried out with discipline to maintain connections with ancient past; animism and Kami

### **Grades 9-12**

AH.13: Describe the origins and central features of Shintoism: Key Person(s): No singular founder; Sacred Texts: No sacred text; Basic Beliefs: localized tradition that focuses on ritual practices that are carried out with discipline to maintain connections with ancient past; animism

CI.03: Analyze how cultural characteristics (e.g., language, religion, ethnicity, gender roles) link, divide, and/or define regions.

CI.20: Compare and contrast folk and/or traditional culture with popular culture, and analyze efforts to preserve folk culture amid the spread of popular culture.

S.10: Compare and contrast various cultures of the world.