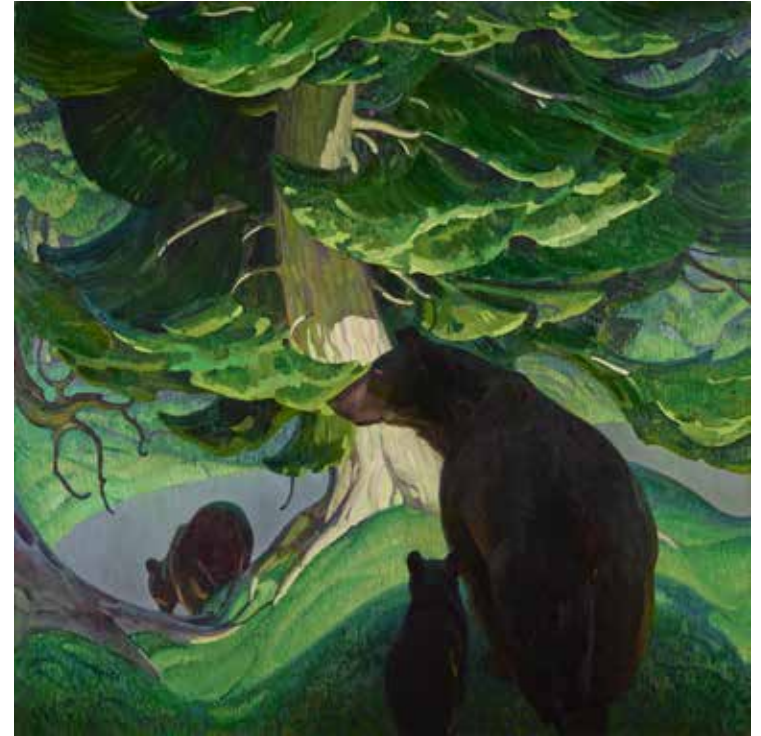




Charles Partridge Adams. *Sunset in Colorado*, ca. 1900. Oil on canvas, 19 3/4 x 29 3/4 in. Denver Art Museum: Museum Exchange with Lemon Saks, 1969.53

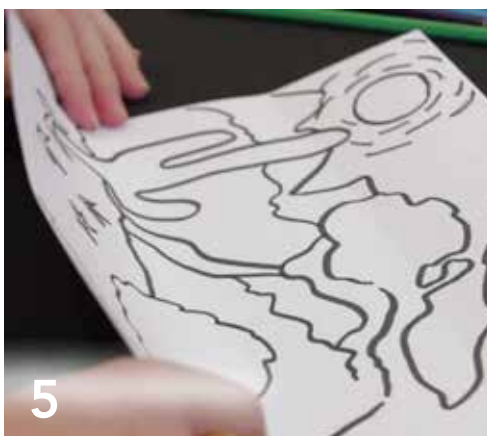
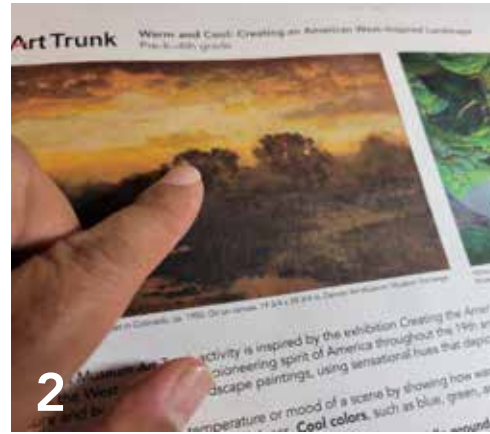


William Herbert Dunton. *Black Bears*, ca. 1927. Oil on canvas; 50 x 50 in. Denver Art Museum: Roath Collection, 2013.101

This Frist Art Museum Art Trunk activity is inspired by the exhibition *Creating the American West in Art*. Its images of many people of the West and the wildlife exemplify the pioneering spirit of America throughout the 19th and 20th centuries. Artists of this time also captured adventure and beauty in their landscape paintings, using sensational hues that depicted dawn and dusk, as well as chilly desert nights.

Colors can communicate the temperature or mood of a scene by showing how warm or how cool it is. **Warm colors**, such as red, yellow, and orange, can show heat, light, and playfulness. **Cool colors**, such as blue, green, and purple, can suggest coldness, calm, and clear skies.

Most paintings, especially landscapes, consist of a **foreground**, **middle ground**, and **background**, which give the feeling of depth. Objects in the **foreground** appear the closest and biggest, whereas objects in the **background** appear further away.



Objective

Draw your own western landscape, using warm or cool colors to set its mood or time of day.

Materials

A 2B or HB (#2) pencil

1 sheet of copy paper or cardstock

(approximately 8 1/2 x 11 in. or 9 x 12 in.)

A black or dark-colored pen or marker

Three crayons or colored pencils in warm colors

Three crayons or colored pencils in cool colors

Steps

1. Look at the art on the front of this sheet. Think about the characteristics and natural features of these landscapes.

2. Determine which features you would like to include in your drawing (such as mountains, trees, or grassy hills).

3. Using a pencil, lightly draw your landscape on the paper or cardstock.

4. Trace over your pencil lines with a black or dark-colored marker.

5. Fold your paper to divide your landscape into three equal sections from the top to the bottom. Identify which section is the **foreground**, which is the **middle ground**, and which is the **background**.

6. Decide whether you want a warm-colored landscape or a cool-colored landscape. Pick three warm or three cool colors to shade in your foreground, middle ground and background.