

**Frist Art
Museum**

Impact Report
2019 By the Numbers

Who we are

The Frist Art Museum (FAM) opened in April 2001 and is accredited by the American Alliance of Museums. Originally conceived through a community visioning process to shape the city's future, FAM is a leading institution in Nashville's cultural fabric and has gained national and international recognition for its exhibitions and programs. Located downtown in a beautifully restored 1934 art deco building, FAM serves a metropolitan area with more than 1.83 million people. Museum operations and programming are managed by a staff of approximately 80, led by executive director and CEO Susan H. Edwards, PhD, and guided by a 24-member board.

Mission

The mission of the Frist Art Museum is to present and originate high-quality exhibitions with related educational programs and community outreach activities.

Vision

The vision of the Frist Art Museum is to inspire people through art to look at their world in new ways.

The World Is Better Because of Museums

Museums spend more than \$2 billion each year on education activities; the typical museum devotes three-quarters of its education budget to K–12 students.

Museums are committed to ensuring that Americans of all backgrounds have access to high-quality museum experiences.

Museums support more than 726,000 American jobs and contribute \$50 billion to the U.S. economy each year.

There are approximately 850 million visits each year to American museums—more than the attendance for all major league sporting events and theme parks combined.

Museums also provide many social services, including programs for children on the autism spectrum, English as a Second Language classes, and programs for adults with Alzheimer's or other cognitive impairments.



These statistics are drawn from the American Alliance of Museums website, accessed March 30, 2020, <https://www.aam-us.org/programs/about-museums/museum-facts-data/>.



In 2019, the
Frist welcomed
its **four millionth**
visitor.

Total
2019 Frist
attendance
359,352



The Frist's
attendance
increased
44%
from 2018



The Frist
had **61,327**
visitors
under 18.

Frist Art Museum US Attendance



Top 5 countries our non-US visitors come from

- Canada
- Australia
- England
- Germany
- France

■ Southeast USA 84%

■ Tennessee 74%

■ FAM service area 68%

Cannon, Cheatham, Davidson, Dickson, Hickman, Macon, Maury, Robertson, Rutherford, Smith, Sumner, Trousdale, Williamson, and Wilson counties

■ Davidson County 46%

13,000

Household Membership Growth

from 2015 to 2019

A membership to the Frist Art Museum is more than just free admission; it is a passport to some of the greatest art collections in the world. Through special exhibitions, lectures, and programming, we strive to make the Frist Art Museum yours—a place for reflection, rejuvenation, and inspiration. Revenue received through memberships helps support the Frist's mission.

12,000

11,000

10,000

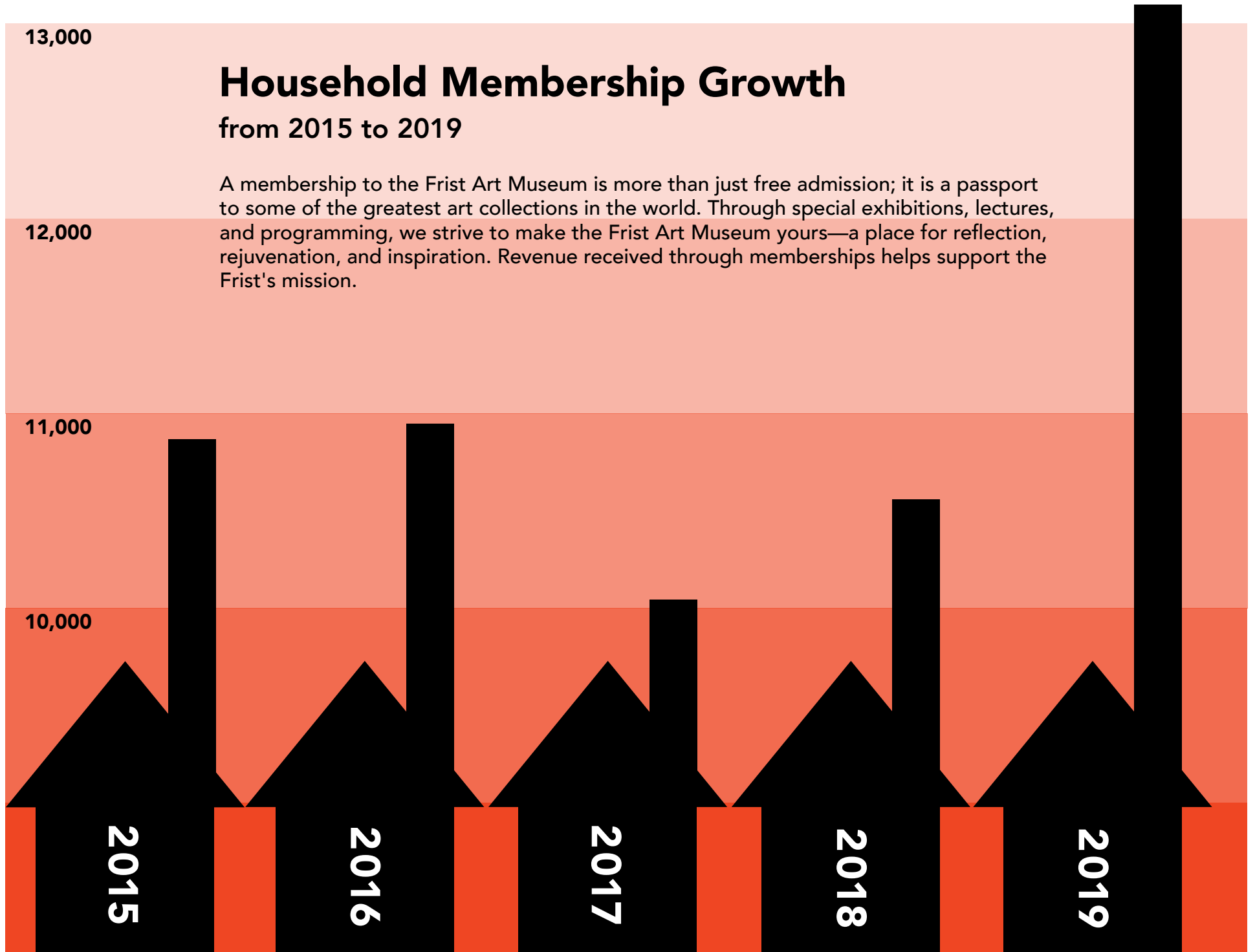
2015

2016

2017

2018

2019



Education and Community Engagement

25,769 total participants

FAM offers learning opportunities designed to educate, delight, and inform audiences with a diverse range of interests. Educational programs include gallery talks, lectures, live music, tours, Family Festival Days, and studio workshops and demonstrations. FAM places a high priority on accessibility, fostering a welcoming environment so that all visitors can experience the arts regardless of prior knowledge, socioeconomic status, or ability.

■ **School art show participants: 5,221**
FAM's school art shows exhibit selected artworks from student artists across Middle Tennessee.

■ **Educator program participants: 385**
At the Frist, educators can gather to examine original works of art and participate in studio activities. They also receive instructional materials for use in classrooms.

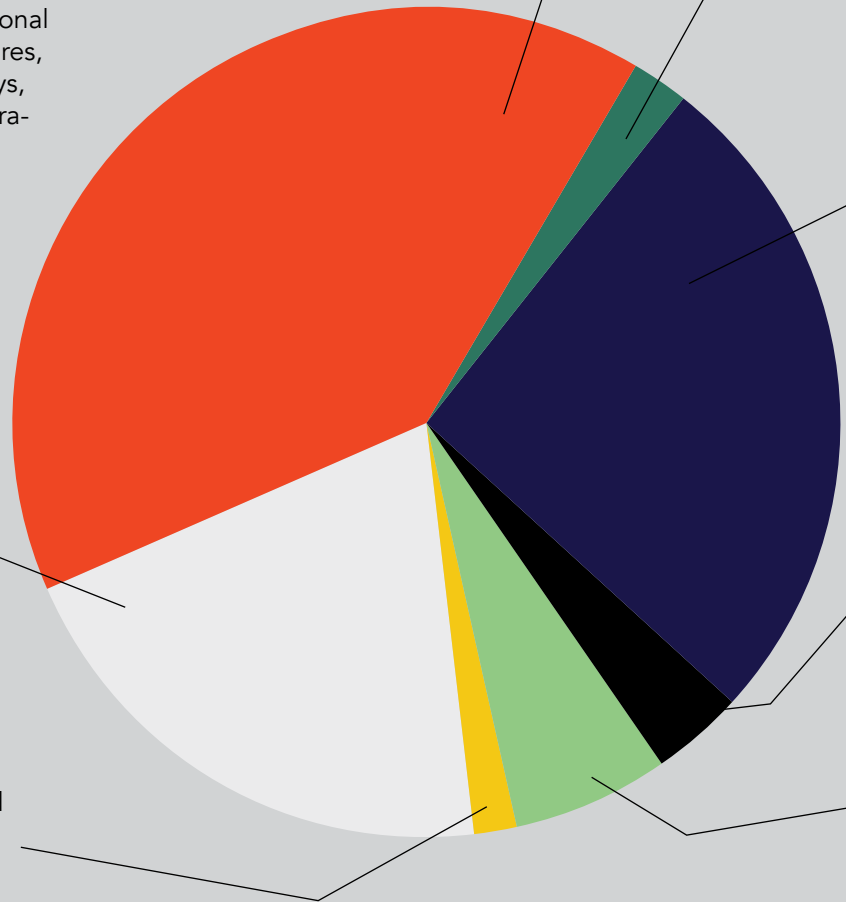
■ **Youth and family program participants: 10,368**
Youth and family programs related to current exhibitions throughout the year include free Family Festival Days, Family Mondays, and more.

■ **Volunteer program participants: 551**
Volunteer programs include training and appreciation events.

■ **Adult program participants: 6,748**
Adult programs bring a variety of insights to exhibitions through activities such as lectures, films, art-making workshops, and more.

■ **Teen program participants: 924**
Programs such as the Teen Arts Action Group (TAAG), ARTlabs, and Teens Take the Frist help youth develop confidence in their artistic skills and form community.

■ **Community engagement participants: 1,572**
FAM's community engagement programs break down barriers to arts participation, with a focus on serving groups least likely to visit an art museum.



To learn more about our programs, please visit FristArtMuseum.org.

Student Art Shows

1,678 student artworks displayed



Participating School Systems

- Franklin Special School District
- Lebanon Special School District
- Metro Nashville Public Schools
- Murfreesboro City School District
- Sumner County School District
- Williamson County School District
- Wilson County School District

Community Partners

Since 2000, the Frist Art Museum has partnered with local organizations and nonprofits in the Nashville area that serve traditionally underserved populations. Through the Community Partners program, FAM offers enriching exhibition-based cultural experiences while simultaneously serving as a safe place for participants to develop new skills and connect with their neighbors.

Metro Parks and Recreation

Antioch Community Center
Bellevue Community Center
Centennial Art Center
Centennial Sportsplex
Cleveland Community Center
Coleman Regional Center
Easley Community Center
East Regional Center
Elizabeth Senior Center
Hadley Park Regional Center
Hartman Regional Center
Hermitage Community Center
Kirkpatrick Community Center
Looby Community Center
Madison Community Center
McCabe Regional Center
McFerrin Community Center
Napier Community Center
Old Hickory Community Center
Paradise Ridge Community Center
Parkwood Community Center
Sevier Regional Center
Shelby Park Community Center
Smith Springs Community Center
Southeast Community Center
South Inglewood Center
Watkins Park Community Center
West Park Community Center

Nashville Public Library

Bellevue Branch Library
Bordeaux Branch Library
Donelson Branch Library
East Branch Library
Edgehill Branch Library
Edmondson Pike Branch Library
Goodlettsville Branch Library
Green Hills Branch Library
Hadley Park Branch Library
Hermitage Branch Library
Inglewood Branch Library
Looby Branch Library
Madison Branch Library
Main Library
North Branch Library
Old Hickory Branch Library
Pruitt Branch Library
Richland Park Branch Library
Southeast Branch Library
Thompson Lane Branch Library
Watkins Park Branch Library

Local nonprofit organizations

18th Avenue Family Enrichment Center
Bethlehem Centers of Nashville
Catholic Charities of Tennessee, Inc.
Center for Refugees and Immigrants of Tennessee
Chinese Arts Alliance of Nashville
Conexión Américas
Consulate General of Japan in Nashville
Down Syndrome Association of Middle Tennessee
Easter Seals Tennessee

FiftyForward Bordeaux
FiftyForward Donelson Station
FiftyForward J. L. Turner Center
FiftyForward Madison Station
Gordon Jewish Community Center (GJCC)
Habitat for Humanity of Greater Nashville
Harvest Hands
Healing Arts Project, Inc. (HAPI)
Kala Nivedanam
Kurdish American Youth Organization
Martha O'Bryan Center
Nashville Adult Literacy Council
Nashville International Center for Empowerment
New Vision, Inc.
Northwest Family YMCA
Oasis Center
Preston Taylor Ministries
Progreso Community Center
Project for Neighborhood Aftercare
Project Return
Room in the Inn
Safe Haven Family Shelter
Salama Center
Salvation Army
St. Luke's Community House
Tennessee Haitian Voice
Tennessee Voices for Children
Thistle Farms
Vanderbilt Children's Hospital
Vanderbilt Kennedy Center
YMCA Achievers
Youth Encouragement Services @ Lindsley
Youth Encouragement Services @ McIver

"The staff is very friendly and welcoming which really makes me want to explore and participate."

"I feel empowered when I'm here."



What do visitors feel is most valuable about Martin ArtQuest?

The opportunity to be creative

Learning about art and art-making techniques

Trying something new

Many different art-making stations

Being unplugged from technology

Open and welcoming environment



MAQ
attendance
185,521

Martin ArtQuest® (MAQ) is Nashville's premier destination for hands-on art experiences. MAQ is an entry point for visitors of all ages and abilities to explore art while engaging their creativity and imagination. Accessible stations provide a range of art-making opportunities—animation, drawing, painting, printmaking, and sculpture—each with high-quality materials and the support of professional educators

2019 Exhibitions

Ingram Gallery

Paris 1900: City of Entertainment
October 12, 2018–January 6, 2019

Van Gogh, Monet, Degas, and Their Times: The Mellon Collection of French Art from the Virginia Museum of Fine Arts
February 2–May 5, 2019

A Sporting Vision: The Paul Mellon Collection of British Sporting Art from the Virginia Museum of Fine Arts
February 2–May 5, 2019

Frida Kahlo, Diego Rivera, and Mexican Modernism from the Jacques and Natasha Gelman Collection
May 24–September 2, 2019

Hearts of Our People: Native Women Artists
September 27, 2019–January 12, 2020

Conte Community Arts Gallery

2018 Young Tennessee Artists: Selections from Advanced Studio Art Programs
October 20, 2018–March 17, 2019

Connect/Disconnect: Growth in the "It" City
March 22–August 4, 2019

Murals of North Nashville Now
August 10, 2019–January 5, 2020

The Conte Community Arts Gallery is free to the public and showcases exhibitions inspired and created by the community. FAM estimates that 95 percent of its visitors encounter this gallery, making it an ideal space for visitors to create meaningful connections between featured art from around the world and Nashville's vibrant culture and history.

Upper-Level Galleries

Life, Love & Marriage Chests in Renaissance Italy
November 16, 2018–February 18, 2019

Dorothea Lange: Politics of Seeing
March 15–May 27, 2019

Monsters & Myths: Surrealism and War in the 1930s and 1940s
June 21–September 29, 2019

Eric Carle's Picture Books: Celebrating 50 Years of "The Very Hungry Caterpillar"
October 18, 2019–February 23, 2020

Gordon Contemporary Artists Project Gallery

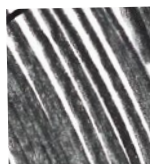
Do Ho Suh: Specimens
October 12, 2018–January 6, 2019

Claudio Parmiggiani: Dematerialization
February 2–May 5, 2019

Diana Al-Hadid: Sublimations
May 24–September 2, 2019

OSGEMEOS: In between
September 27, 2019–January 12, 2020

The CAP Gallery is specifically dedicated to presenting the most dynamic and stimulating contemporary art from around the world. CAP exhibitions promote multiculturalism, with their contents offering special relevance to the growing, ever-diversifying population of Middle Tennessee.

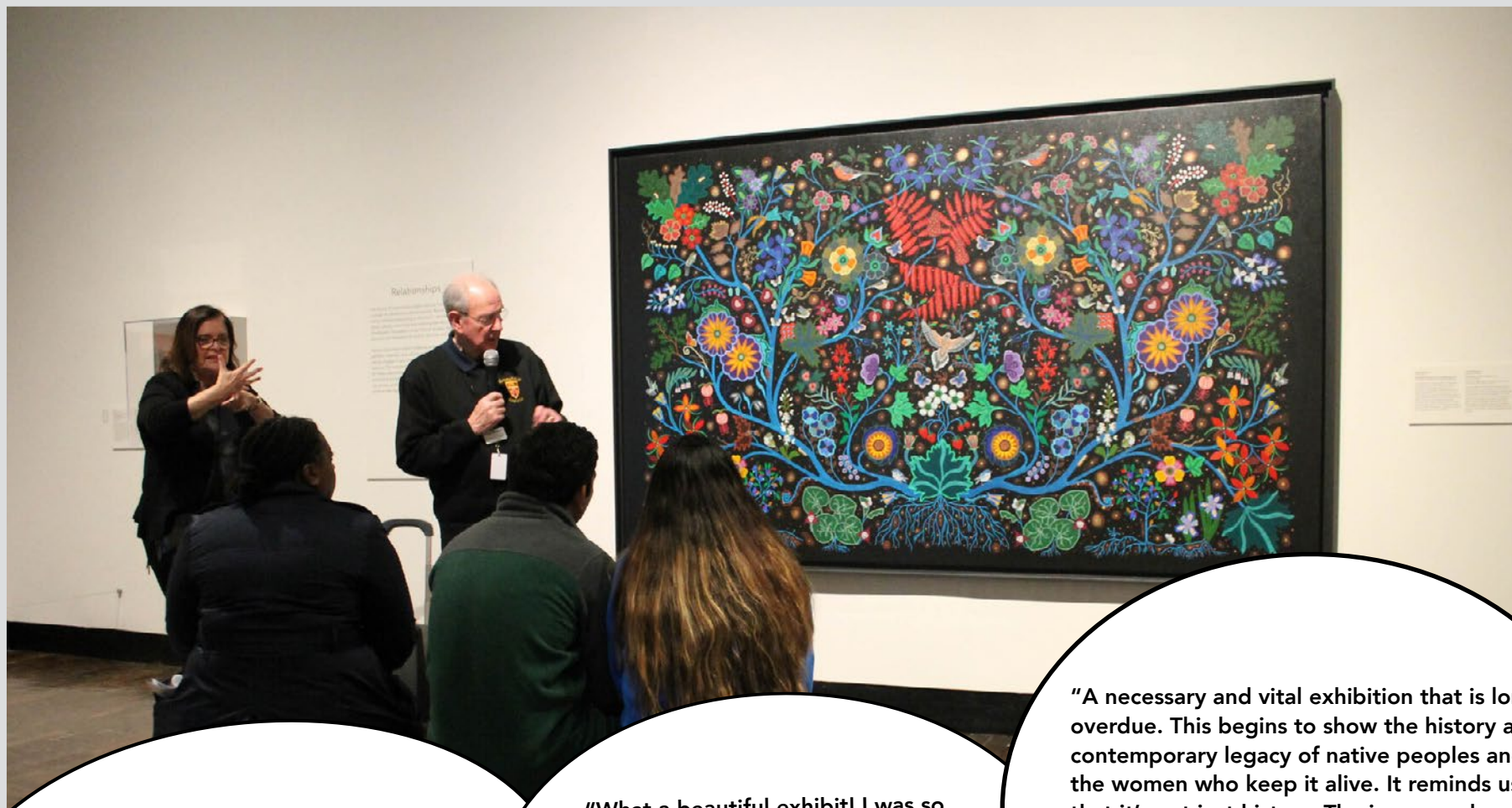


Represents the
geographic regions
of artwork exhibited
by FAM

In 2019, FAM exhibited art from the geographic regions indicated on this page, including these 24 countries:
Armenia, Belgium, Brazil, Canada, Chile, Colombia, Cuba, France, Germany, Great Britain, Guatemala, Hungary,
Italy, Japan, Mexico, the Netherlands, Poland, Romania, Russia, South Korea, Spain, Switzerland, Syria, USA

2019 Exhibition Facts

- 16 exhibitions
- 1,223 objects
- 587 artists featured
 - 174 living
 - 372 deceased
 - 41 unknown



"I love this exhibition. I believe that we live in a Eurocentric world and we often-times don't honor non-Western art as much as we should. Very good! I love it!"

From the comment book for Frida Kahlo, Diego Rivera, and Mexican Modernism from the Jacques and Natasha Gelman Collection

"What a beautiful exhibit! I was so inspired by the many different artists and the time periods they reflected."

From the comment book for Van Gogh, Monet, Degas, and Their Times: The Mellon Collection of French Art from the Virginia Museum of Fine Arts and A Sporting Vision: The Paul Mellon Collection of British Sporting Art from the Virginia Museum of Fine Arts

"A necessary and vital exhibition that is long overdue. This begins to show the history and contemporary legacy of native peoples and the women who keep it alive. It reminds us that it's not just history. The issues and colonial threats that native peoples faced centuries ago are still here and are being swept under the rug. Thank you."

From the comment book for Hearts of Our People: Native Women Artists



Page 3: LEFT, Morgan Murray,
photography intern

Page 4: MIDDLE LEFT, Morgan Murray.
MIDDLE CENTER: Devon Anne Farmer,
education and evaluation intern.
BOTTOM RIGHT, Kendyl Matthews,
photography intern

Page 10: TOP, Morgan Murray.
BOTTOM, Kendyl Matthews

Page 13: Morgan Murray

**Frist Art
Museum**

919 Broadway
Nashville, TN 37203
FristArtMuseum.org

Questions?

Contact Crystal Churchwell Evans, director of development,
at 615.744.3341 or cevans@FristArtMuseum.org